

ASCNET NEWSGROUPS

Joshua Conner

Introduction



- How many people use the newsgroups?
- How many people use windows XP?
- How many people use windows Vista?

- Questions or Comments are welcome at any time!

Overview

- What are the newsgroups?
- How to setup your pc for the newsgroups.
- How to post to newsgroups.
- Signatures and other tips.

What are the news groups?

- ❑ Question and Answer Forum
- ❑ Advice
- ❑ Information on new releases
- ❑ Hardware advice and Configuration
- ❑ Interaction with other Tam users

Setup ASCNET Newsgroups

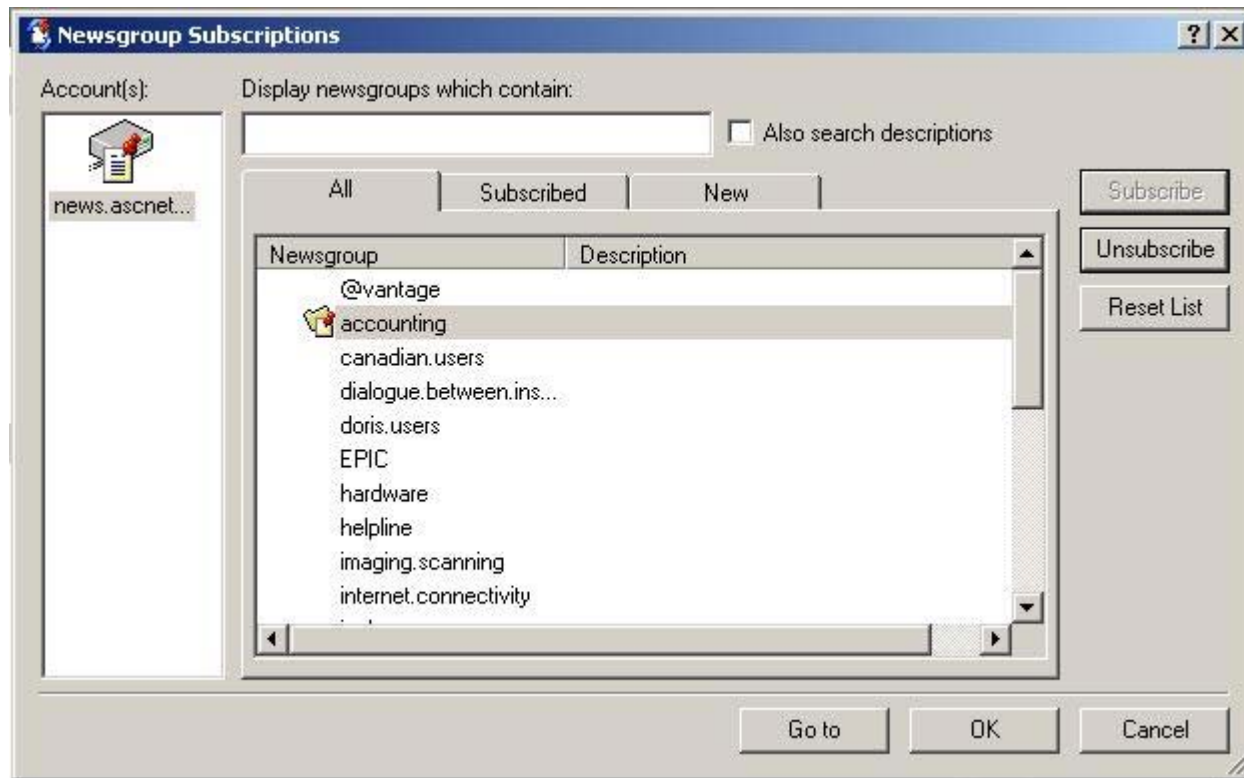
- Many ways to Access the news groups I will show you how to use the included software with windows XP and vista.
 - ▣ Windows XP
 - Microsoft Outlook Express
 - Tools > Accounts
 - Accounts window Click News Tab > Add News
 - Display Name: Type Your Name as you want it to appear when you post (Hit Next)
 - Email Address (Put email address you want people to reply to. (Hit next when finished)

Setup ASCNET Newsgroups

- News Server: news.ascnet.org (Click the box “My news server requires me to log on”)
- Account Name: This is the account name ASCNET provided you for the newsgroups. THEY ARE IN ALL UPERCASE!
- DO Not Click Log on using SPA (Click Next when done)
 - If you don't know your password you can call and ask or use the web lookup form <http://64.226.226.179/newsgroups/id/getid.07.asp>
- Answer Yes to “Would you like to download newsgroups from the news account you just added?”

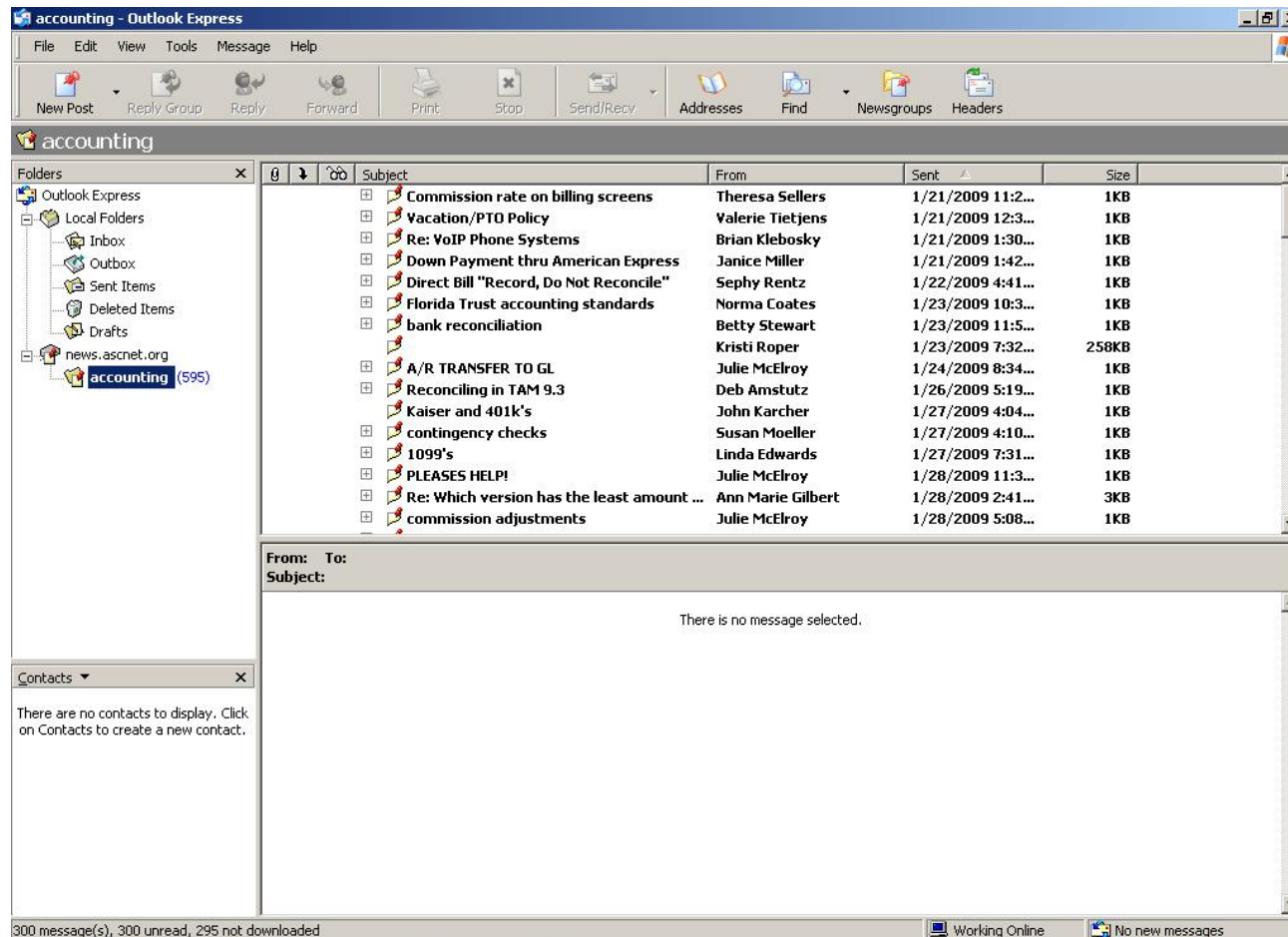
Setup ASCNET Newsgroups

□ Adding Subscriptions



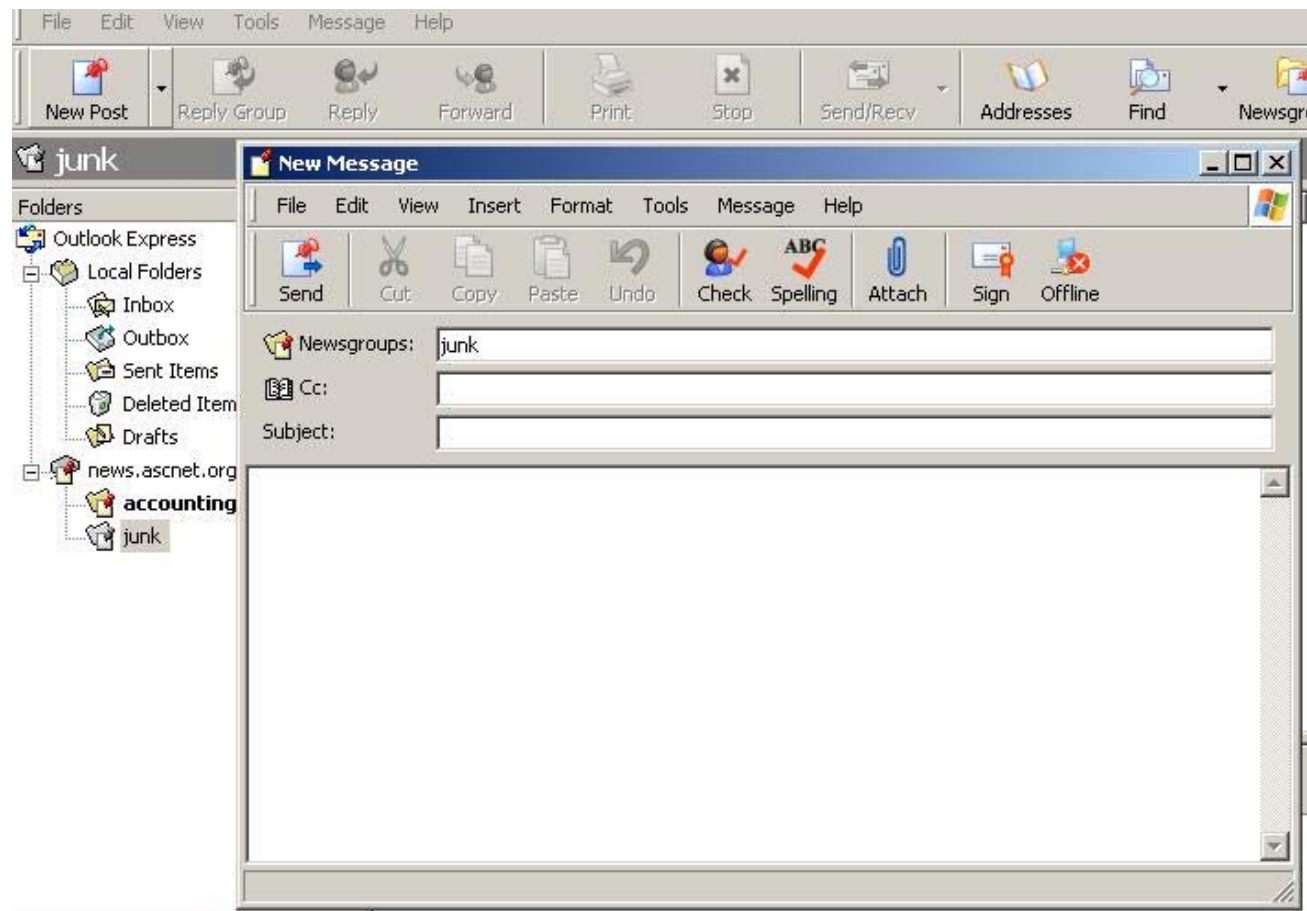
Using the ASCNET Newsgroups

□ Using the Newsgroups



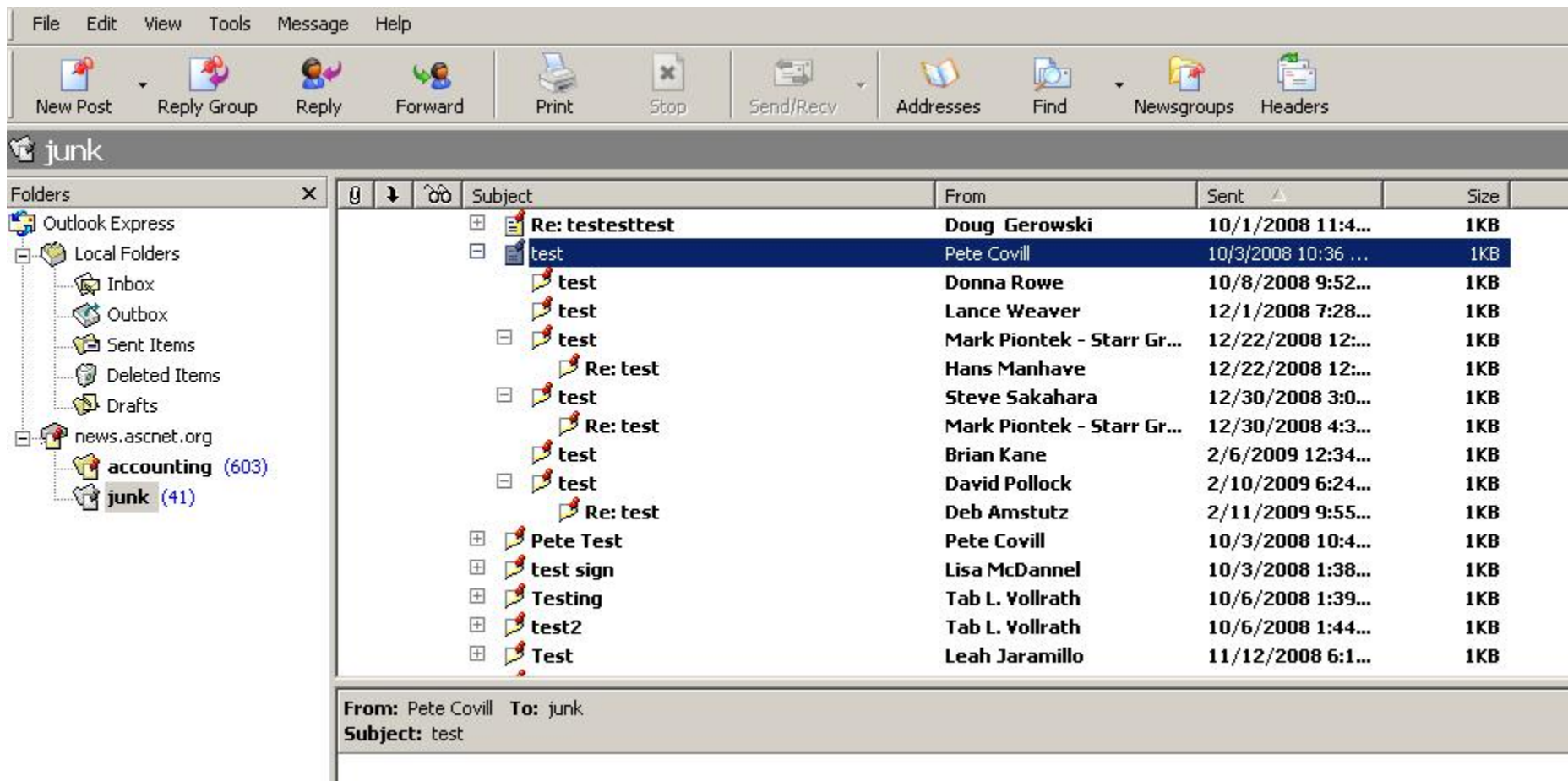
Using the ASCNET Newsgroups

□ Making a New Post



Using the ASCNET Newsgroups

□ The Top Buttons in Outlook Express



The screenshot displays the Outlook Express interface. The menu bar includes File, Edit, View, Tools, Message, and Help. The toolbar contains buttons for New Post, Reply Group, Reply, Forward, Print, Stop, Send/Recv, Addresses, Find, Newsgroups, and Headers. The left sidebar shows the folder hierarchy: Outlook Express, Local Folders (Inbox, Outbox, Sent Items, Deleted Items, Drafts), and news.ascnet.org (accounting (603), junk (41)). The main pane shows a list of messages in the 'junk' folder. The selected message is 'test' by Pete Covill, dated 10/3/2008 10:36 ...

Subject	From	Sent	Size
Re: testestest	Doug Gerowski	10/1/2008 11:4...	1KB
test	Pete Covill	10/3/2008 10:36 ...	1KB
test	Donna Rowe	10/8/2008 9:52...	1KB
test	Lance Weaver	12/1/2008 7:28...	1KB
test	Mark Piontek - Starr Gr...	12/22/2008 12:...	1KB
Re: test	Hans Manhave	12/22/2008 12:...	1KB
test	Steve Sakahara	12/30/2008 3:0...	1KB
Re: test	Mark Piontek - Starr Gr...	12/30/2008 4:3...	1KB
test	Brian Kane	2/6/2009 12:34...	1KB
test	David Pollock	2/10/2009 6:24...	1KB
Re: test	Deb Amstutz	2/11/2009 9:55...	1KB
Pete Test	Pete Covill	10/3/2008 10:4...	1KB
test sign	Lisa McDannel	10/3/2008 1:38...	1KB
Testing	Tab L. Vollrath	10/6/2008 1:39...	1KB
test2	Tab L. Vollrath	10/6/2008 1:44...	1KB
Test	Leah Jaramillo	11/12/2008 6:1...	1KB

From: Pete Covill **To:** junk
Subject: test

Setup ASCNET Newsgroups

- Using Windows Vista
 - ▣ Windows Vista uses Windows Mail
 - ▣ It is the same as outlook express with a new look
 - ▣ To setup ASCNET newsgroup
 - Tools > Accounts > Add > Newsgroup Account
 - Display Name “Your Name”
 - Email Address where you want to receive replies
 - News Server news.ascnet.org (Check the box my server requires me to login)
 - Username and Password That ASCNET gave you
 - Then Finish you are done!

Setup ASCNET Newsgroups

- Windows Vista Continued
 - ▣ Add Subscriptions just like outlook express
 - ▣ The buttons at the top are the same as outlook express just not as pretty



Setup ASCNET Newsgroups

□ Windows Vista Continued

The screenshot shows the Windows Mail application window titled "junk - Windows Mail". The interface includes a menu bar (File, Edit, View, Tools, Message, Help) and a toolbar with icons for Reply Group, Reply, Forward, and Send/Receive. The left pane displays a tree view of folders, including Local Folders, Microsoft Communities, and news.ascnet.org. The right pane shows a list of newsgroups with columns for Subject, From, Sent, and Size. The "Test 2" newsgroup is selected, and a list of messages is displayed below it. The bottom pane shows the details of the selected message, including the sender (Kevin Crow), subject (Test 2), and the body text (Testing).

Subject	From	Sent	Size
Test 2	Brian Kane	2/6/2009 12:33...	1KB
Test 2	Kevin Crow	12/24/2008 7:45 ...	1KB
Test 2	Steve Sakahara	12/31/2008 3:39 ...	1KB
Re: test1	Jennifer Klimo	12/19/2008 4:49 ...	1KB
Category on TAM	Joy Inesola	12/12/2008 3:1...	1KB
testlance	Lance Weaver	12/1/2008 7:28...	1KB
E&O Question	Laura Howard	11/17/2008 10:...	1KB
Test	Leah Jaramillo	11/12/2008 6:1...	1KB
test2	Tab L. Vollrath	10/6/2008 1:44...	1KB
Testing	Tab L. Vollrath	10/6/2008 1:39...	1KB
test sign	Lisa McDannel	10/3/2008 1:38...	1KB
Pete Test	Pete Covill	10/3/2008 10:4...	1KB
test	Pete Covill	10/3/2008 10:3...	1KB
Re: testtest	Doug Gerowski	10/1/2008 11:4...	1KB

From: Kevin Crow <kevin.crow@kapnick.com> To: junk
Subject: Test 2

Testing

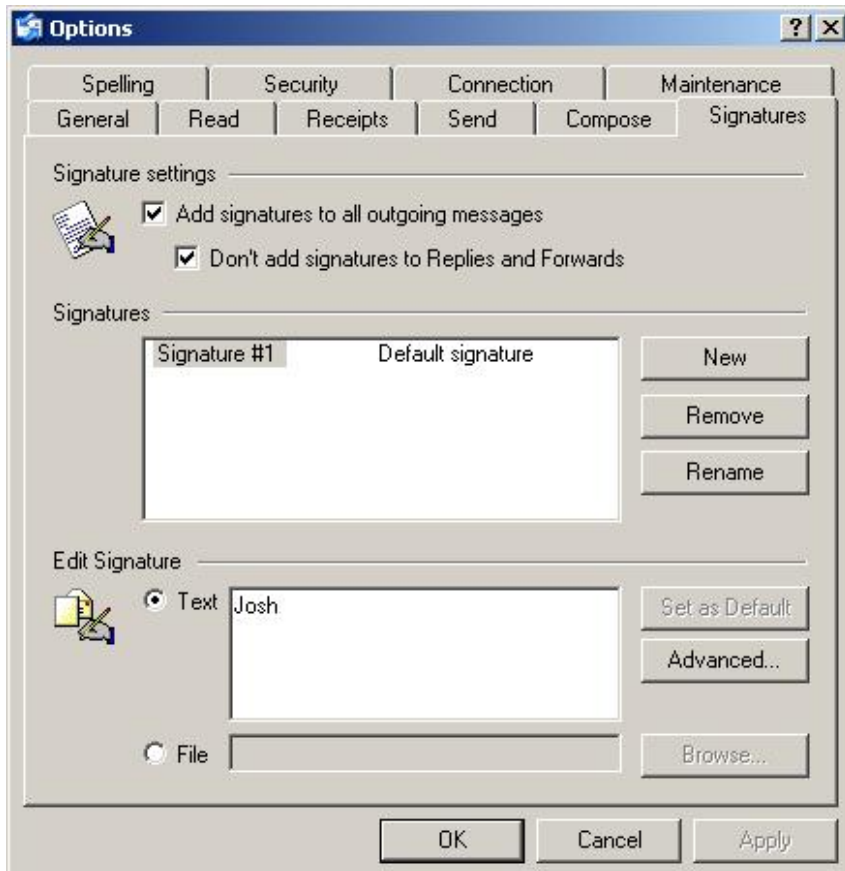
Signatures

□ **A typical Signature File contains:**

- The person's name
- Geographic Location
- The version of TAM / Vision being used
- The number of users on the system
- Network Operating System (Windows 2000, 2003, TAM Online etc...)
- Disk Operating Systems (Windows XP, XP Pro, Windows 2000, etc...)
- Any other software information that would be pertinent

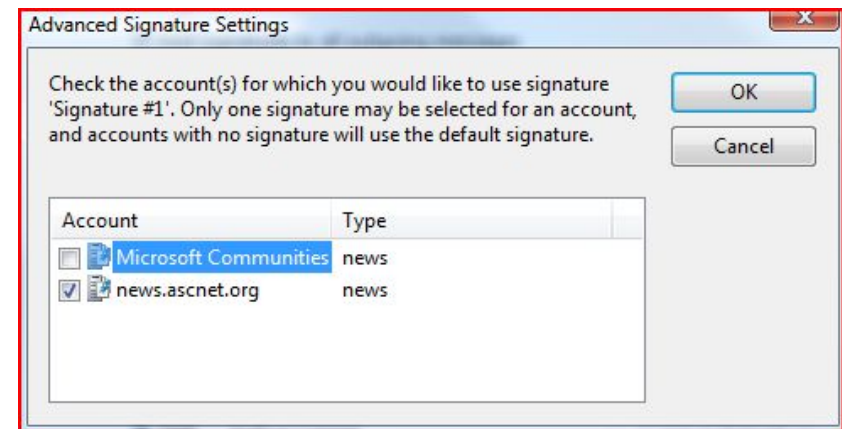
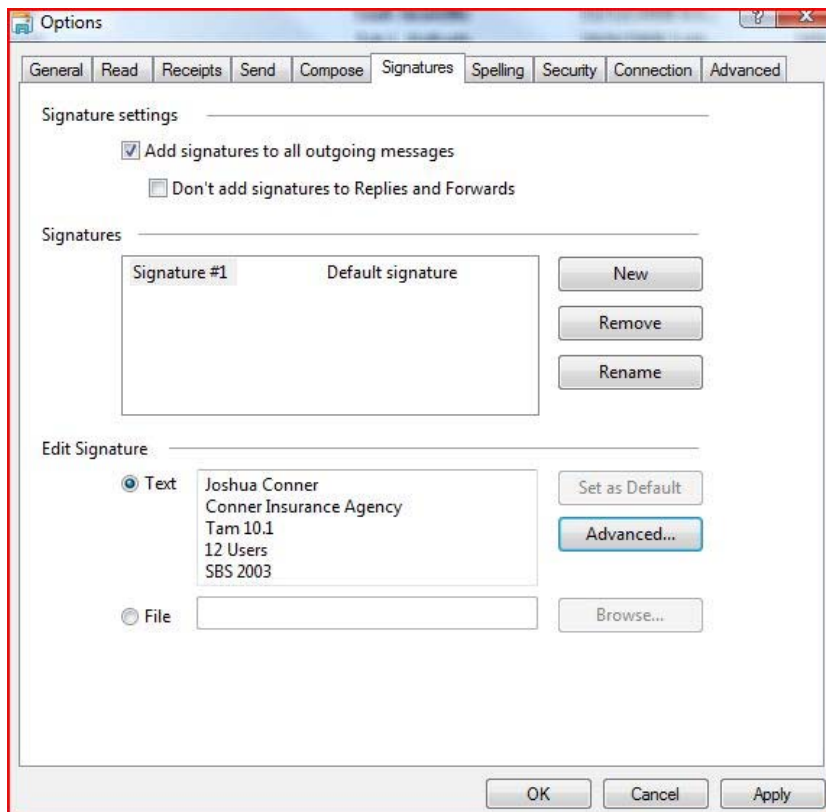
Signatures

- Setting up Signatures in Outlook Express
 - ▣ Tools > Options > Signatures Tab > New



Signatures

- Setting up Signatures in Windows Mail
 - ▣ Tools > Options > Signatures Tab > New



Tips

- Have only one user in your office post per Category
- Have patience it may take awhile for someone to answer your question don't just keep posting it.
- Don't post your question in every category
- If you have a problem with a person email them personally don't air it in public.
- Remember sarcasm doesn't translate to text well.